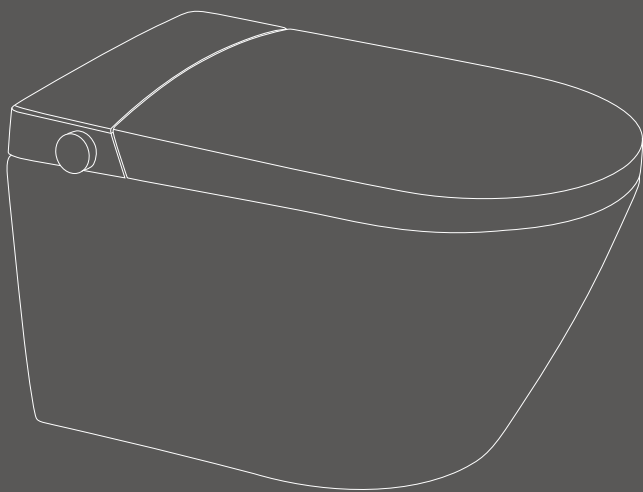


IntelligentToilet
INSTRUCTIONS FOR THE USE OF PRODUCTS

Wisdom knows you better
Automatic Intelligent Toilet



Note: Before using, please read this manual carefully.
Please pay attention to the warning and regulation of obeying the product manual inside marking.

Safety directory

Please cautiously read before installing and using.

Warning-To avoid electric shock

1. Do not place the product where it may get wet.
2. Do not drop the remote control into the water.
3. Do not spray water into the product or plug.

Warning: To prevent the possibility of burns, electric shocks, fires and injuries.

1. Young children, temperature insensitive users, when using this product, should be accompanied by others. And turn off or lower the seat temperature.
2. The product is limited to the function on the manual, do not use other equipments.
3. Do not continue to use when the product is out of order, damaged or flooded. Please send the product to the designated repair center for repair.
4. Please make sure that the wires are not damaged by burning.
5. Do not use this product when you are out of your mind.
6. Do not plug the product or pipe.
7. Do not use outdoors.

Please be sure to observe the following

Please don't sprinkle urine at the essence and spray.

Pull out the plug when it thunders.

Strictly forbid to directly flush with water.

Please do not wipe seat and cover with dry cloth or toilet paper.

Please do not open the seat ring or cover violently.
- May cause cracking or malfunction.



Please take antifreeze measures to prevent damage caused by freezing.



Please do not put heaters near this product.
- Discoloration or malfunction will occur



Safety Caution

Note: please cautiously read before using

Please read carefully before using. The cautions listed here are related to safety and please follow. 

This product is an electrical product. Please do not install it in a place where it is easy to be splashed by water or high humidity. When using in the bathroom, please install a vent to keep good air flow in the bathroom.

The socket for power distribution should be set as follows

- The gearing position of electric outlet pleases to give examples 0.3 min the ground above, and leave bathtub as far as possible a little bit farer.
- The back track of electric outlet pleases use a high feeling and rapid type electric leakage switch(the sum certainly responds the electric current 15 mA following) or use to insulate the transformer 1.5 KVA above, the 3 KVA is following)carry on a protection.

 The product connects a ground of line to carry on to connect a ground of processing, if has never carried on to connect a ground of processing, may arouses to get an electric shock.

Note: the grounding treatment mentioned here means that the grounding resistance is below 100Ω, and the grounding wires of the switchboard shall be copper wires with a diameter of more than 1.6mm.

While using in the bathroom please confirm the power plug have already used silica gel to carry on a waterproof processing.

Examples and illustrations of ICONS



It is not feasible (prohibited). The image on the left shows (disassembly is prohibited).



Represents something that must be (enforced). The left-hand diagram shows (must comply).



Must obey

Notice heat burn

- Please turn the seat temperature down or off when sitting on the toilet for a long time.
- Please set the temperature to room temperature when the following persons use the seat to dry gently.

- Children, the elderly, the sick, the disabled, etc.
- People who take sleeping pills, get drunk and get overtired.

Do not use any power source other than AC 220V/110V

- It may start a fire

Keep cigarettes and other fire kindling away from the product

- It may start a fire

Do not use loose and unstable power sockets

- It may cause fire or electric shock

Please don't sprinkle water or rinse on product essence or the power plug.

- May arouse a fire or get an electric shock
- May cause toilet break, damage or indoor seepage.

When long time didn't use, please pull out the power plug.

- For safety, please pull out the power plug
- For re-use, please drain water for one minute before use.

Please do not flush other items except for urine and feces

- May cause then block, sewage outside overflows.

Do not unplug the power plug with wet hands

- It may cause electric shock

Do not distort or damage the water inlet

- It may cause a leak



Prohibit

Do not continue to use the product when it breaks down

When the following occurs, please unplug the power plug, close the inlet Angle valve, stop the inlet.

- Ceramic WC is leaking
- Cracks appear
- Abnormal sound and smell
- Fume-off
- Abnormal heating
- The toilet is clogged

- If continued under the condition of failure, it may cause fire, electric shock or indoor seepage problems

Do not disassemble, repair or transform the product without permission

- It may cause a fire or electric shock

Do not install this product in damp places such as bathrooms

- It may cause a fire or electric shock

Do not damage the power cord or toilet seat cable

- Don't pull
- Don't process
- Don't heat
- Don't forcibly bent
- Do not place heavy objects on the power cord and toilet seat connection line.

- May cause fire, electric shock or short circuit. If the power supply is damaged, please contact a professional for repair.

Do not use extension wires, otherwise, it may cause a fire or electric shock

- Do not connect wires or use extension cords, which may cause fire and electric shock.

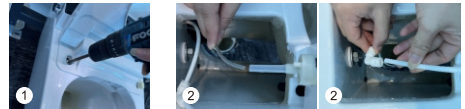
Do not use unhealthy water

- May cause skin irritation and other problems

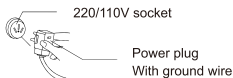
The first use of Intelligent toilet

Note: To ensure the normal use of the product, please follow the instructions to text.

- 1.Insert the power plug into the AC (AC) 220/110V socket
- 2.Please confirm whether the indicator of the digital display panel is lit
- 3.Confirm whether the inlet valve is take on
- 4.Whether the hose between the wall Angle valve and the toilet inlet valve is installed in place



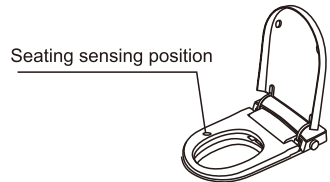
- 1.Unscrew the screws , then remove the cover
- 2.Connect the air pipe and the water pipe of the water tank with the pipe of the ceramic toilet .



Caution-Confirmed matters before using

- 1.Check whether the sprinkler head and water pipe leak, dry all parts of the water pipe and check with blotting paper.
- 2.Press the seat around the seat sensor, whether there is a sound.
- 3.Check whether the cleaning, drying, automatic deodorization and automatic flushing are normal
- 4.Whether the Damped structure is normal.

Check the functions of cleaning, drying and automatic deodorization, make sure the sensor is on.When cleaning, cover and block the spray nozzle, so as not to splash.



Warning - Be sure to firmly connect ground wires ⚠️

The power plug of this product is a three-phase plug (with ground wire). There is a danger of electric shock when there is a fault or leakage of electricity. If there is no ground plug in the socket, consult with the electrical installation company. Do not use power supply other than AC 220V/110V, please wiring according to relevant regulations.

Using the wrong power supply can easily cause fire

1. Radar switches to foot cover: press the cover button on the remote control for 5 seconds,
2. Turn off | turn on disseat water flushing: press the automatic water flushing button on the remote control for 5 seconds
3. Turn off | turn on the function of flushing upon cover falling: press the cover and flushing buttons on the remote control at the same time

Instructions for remote control

Note: Please read the following carefully before use

HIP/ MOBILE

Press this button when you are seated, the Hip wash cleaning nozzle will spray at the fixed position for 2 minutes and then stop spraying automatically.

FEMALE/ MOBILE

Press this button when you are seated, the female cleaning nozzle will spray at the fixed position for 2 minutes and then stop spraying automatically.

MASSAGE

Press this button to hip cleaning and massage. The massage is generated through regular changes in the water pressure to promote blood circulation

FLUSH

Press this button and will start flushing.

DRYING

Press this button to start drying when you are seated. Warm air drying will stop automatically after 3 minutes.

POWER

Press this key to open or shut off the power

Water Temperature

4 degrees can adjust the water temperature the temperature can be set as , one degree : the environment temperature,second degree :34°C, Third degree :37°C, Forth degree : about 40 °C

Seat Temperature

4 degrees can adjust the seat temperature the temperature can be set as,one degree : the environment temperature,second degree :34°C, Third degree :37°C, Forth degree : about 40 °C.

Wind Temperature

4 degrees can adjust the wind temperature the temperature can be set as , one degree:the environment temperature, second degree:about 35°C, Third degree :about 45°C, Forth degree : about 55 °C.

CLEANING HEIGHTEN

It can increase or decrease the force of cleaning water pressure. It can be set to weak, medium, strong, or strongest.

FORWARD

Press this button during the "hip" or "female" cleaning and adjust the nozzle position without the use of the removable cleaning function.

STOP

You can stop the "Hip cleaning", "Female cleaning", "Drying" and other functions in operation.

NIGHT LIGHT

The night light can be turned on or off in the power-on state.

NOZZLE CLEANING

Nozzle extended and water out for nozzle washing

ENERGY SAVING

The monitor or indicator light of the toilet goes off, and the toilet enters the state of intelligent power-saving standby.

This key is only applicable to the type of sensor flip-over

COVER

Press this button, the seat cover will open automatically, and then press it again, the seat cover will close automatically.

SEAT

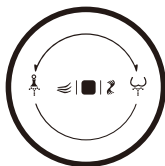
Press this button, the seat opens automatically, and press again to close the seat automatically.

CODE FOR REMOTE CONTROL

Rotate the knob until the buttocks are clean and hold for about 3 seconds. After a sound, press any button of the remote control to complete the code.

Note: If the remote control has no response in the first time, it should be code.

Side knob instructions



Power on/off: long press the knob for more than 3 seconds
 Hip cleaning: Turn the knob to the left
 Female cleaning: Turn the knob to the right
 Stop: Press the knob once
 Toilet flushing: Press the knob once before seating
 Warm air drying: Press the knob once when seating

Description of other functions

Flushing by foot sensor Close to the foot sensor, turn on the scour function (manual clamshell)

Open cover and seat by foot sensor Close to the foot sensor, automatically open/close cover and seat (automatic flip cover)

Radar automatic clamshell function Close to the toilet, automatically open the cover, automatically close the cover after leaving and flush automatically (automatic flip cover)

Daily cleaning and maintenance

Note: During cleaning and maintenance, please be sure to unplug the power switch and power off

Smart toilet cleaning and maintenance methods

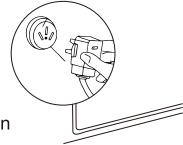
Please wipe it with a soft cloth dampened with water

- If the dirt is not removed in time, it will become difficult to clean, please wipe with water sometimes.

- Static electricity will absorb dust, resulting in the product black, dirty,

water wipe can prevent the generation of static electricity.

- The ceramic body can be removed from the toilet seat to facilitate cleaning between the toilet seat and the ceramic body.

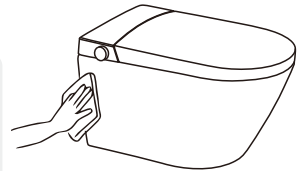


Unplug the power supply before maintenance

Cleaning and maintenance of spray head

If there is dirt in the nozzle. Please clean it with a small brush such as a toothbrush.

- Do not stretch and bend the spray head.



Clean the dust on the power plug regularly

When cleaning, remove the power plug and wipe with a dry cleaning cloth.

Must obey - Poor insulation may cause a fire.

Common fault diagnosis

Note: If similar fault is found, please read the following solution or contact after sales

Fault phenomenon	Fault analysis	Fault handling
Product unavailable	Check to see if the power/socket is loose	Please check the circuit
	Whether there is leakage (the display light of leakage protection plug is not on)	Remove the power plug from the socket and replug it later. Press the reset switch of the leakage protection plug. If the elbow still cannot be operated, please unplug the power plug and entrust the repair.
No water with spray	Check if water is cut off	Pending resumption of water supply
	Check that the Angle valve is closed	Open the Angle valve
	Check if the inlet filter is blocked	Clean or replace the filter
	Check the inlet pipe for bends	Exclude the intake bend
Cleaning insufficient rigidity	Check whether the cleaning pressure is at the lowest level	Refer to the instruction manual for regulating the water pressure
	Check if the inlet filter is blocked	Clean or replace the filter
Spray water disorderly	Abnormal operation	Unplug the plug for one minute and then switch it back on
water temperature is not enough	Check that the water temperature is set low	Adjust the water temperature according to the instructions
	Whether the hot and cold massage function is on	Turn off the hot and cold massage function according to the instructions
The washer often drips water	Solenoid valve failure	Please get professional maintenance technicians

Fault phenomenon	Fault analysis	Fault handling
Misoperation of remote control	Check the battery level of the remote control is it too low	Please replace the battery
Drying/seat temperature too low/no heating	Check whether the temperature is set at low or normal temperature	Adjust the temperature according to the instruction
	Whether to turn on the power saving function	Refer to the manual to choose to turn off the power saving function
Seat/ cover falling too fast	Failure of damping drop function	Please get professional maintenance technicians
The cleaning function cannot be used normally	Is there any other hard material holding it under the seat	Remove the hard objects
	Whether the body's sensing area is covered	Adjust the body sensing area of the seat cover
	Whether the power supply is restored during the power failure	Unplug the plug for one minute and then switch it back on
	The skin completely cover the human body induction area of the seat	Sensor failure, please get professional maintenance technicians
Seat/cover cannot be opened or closed * Only for automatic flip machines	Failure of automatic damping function	1. Disconnect the plug for one minute and switch it back on 2. The above treatment is invalid, please ask professional personnel for maintenance
Low water pressure does not flush clean	Filter mist blocking	Clean the filter according to the instruction
	Pipe bending	Observe whether the connection line bends and keep the water supply line smooth
No siphon flushing is not clean when water pressure is normal	Air escapes from the sewage outlet	Please get professional maintenance technicians
	The S-bend is blocked	Please buy water pipe dredger in the market for dredging
Flush is not clean when water pressure normal	Flush valve failure	Ask professionals for maintenance

Product standard

Rated voltage	Alternating voltage 220V/110V±10%, 50HZ/60HZ		
Rated power	Water inlet temperature: 15°C Outlet water temperature: 40°C Water discharge: 750ml/min Power: 1350W		
Cleaning	Water outlet	Hip cleaning	About 700 ml/min
		Female cleaning	About 700 ml/min
	Outlet water temperature		Normal temperature, and 34°C/37°C/40°C(4 grades)
	Water heating		Instant water heater
	Heater power		Water inlet temperature: 15°C , Outlet water temperature: 40°C Water discharge: 750ml/min Power: 1350W
Safety device		Water temperature sensor, Temperature blocking filament, Temperature controller, Leakage protector	
Seat heating	Seat temperature		Normal temperature, and 34°C/37°C/40°C(4 grades)
	Heater power		40W
	Safety device		Water temperature sensor, Temperature blocking filament
Warm drying	Wind temperature		Normal temperature, and 35°C/45°C/55°C(4 grades)
	Air flow		>0.2m3/min
	Heater power		220W average(The maximum is about 350W)
	Safety device		Bimetallic strip, Temperature blocking filament
Deodorize	Type	Activated carbon high efficiency filter	
Mobile cleaning		The spray head can move 1.5cm forward and backward	
Spray position		Adjustable Fore and Aft	
Water temperature		5~40°	
Water pressure		Minimum essential water pressure: 0.06mpa, maximum water pressure: 0.75mpa (at rest)	

Due to the different printing time of the materials, the product specifications may be slightly changed. Please refer to the material object.